



Mt. Martha Primary School

Mt Martha Primary
Principal
Mr Martin Page

Assistant Principals
Mr Hugh O'Brien
Mrs Karen Walker

**Mt Martha Primary
Contact Details**
37-55 Glenisla Dve
Mt Martha Vic 3934

Reception
5974 2800

Absentee Reporting
Lodge via Compass parent portal

Website
www.mtmarthaps.vic.edu.au

Email
mount.martha.ps@education.vic.gov.au

Office Hours
8.30am - 4.15pm
Monday - Friday

**OSHCP - Out of School Hours Care
Program**
0407 438 858
Coordinator - Gillian Reid



PSW Mornington Uniform Shop
Tues - Friday 9am - 5pm
Saturdays 10am - 1pm
1/22 Watt Road,
Mornington Vic 3931
03 9768 0346
1800 337 396
Online Ordering:
www.psw.com.au

BANKSIA BULLETIN - Thursday 25 November 2021

Mt Martha Primary School strives to empower students to be active learners who make a positive impact in a changing world.

PRINCIPAL'S REPORT

Reminder: Final Pupil Free Day 2021 - A reminder that **Friday 3rd December** is a Pupil Free Day for Mount Martha Primary School. Teachers will be focussing on an audit of curriculum to determine which areas were impacted by remote learning. This information will then be made available to the next year level as a focus for teaching and learning in Term 1 2022. Teachers will also be undertaking follow up work in the school values which commenced earlier this term. No students are required to attend. Out of School Hours Care are running a program on the day with information provided in the newsletter. Bookings are required.

Semester Two Reports and learning Conversations - Teachers are currently completing assessments and writing Semester 2 reports. Reports will be available via Compass on **Monday 13 December after 3pm**. This year during the extended periods of remote learning there have been ongoing opportunities for parents and teachers to discuss student learning. We appreciate that some parents/carers may like a "catch up" conversation with the teacher prior to reports being published. Teachers may also contact parents to arrange a "catch up". Appointments should be made at mutually convenient time, utilise WebEx or telephone and should be around 10 minutes duration.

COVID Update - Unfortunately COVID is still circulating widely in communities and so there is a chance the school will experience another transmission event. I have included information on what to do if your child or a staff member is identified as a school based contact in this newsletter.

For consistency of process and communication the school is required to follow Department of Education and Training (DET)/Department of Health (DH) requirements which includes actions, timelines including communicating with families and the use of DET template notification letters.

After receiving a report of a confirmed positive COVID case the school makes a report to DET. Further details are sought, contact tracing is undertaken by the school and then provided to DET to assist their decision making. DET determine the required actions with the Regional Director issuing directives for the school to follow and approved communications for the school community. Despite everyone in school communities wanting information and action as soon as possible this process may take time as it can depend on the number of schools experiencing cases at the same time. Schools are required to wait for DET directives.

School based contacts are notified and are required to follow the steps for a "school based contact" listed in the newsletter. Non school based contacts are also notified and advised as to whether a school closure is required or not. Closure may be necessary if additional cleaning or contact tracing is required or if it is an extensive outbreak. Closure of the school is a decision of a Regional Director rather than school Principals.

Our Mission is to ensure high quality and engaging learning program that builds on the capability of every student.



The Mount Martha Primary School community acknowledges & pays respect to the Boon Wurrung/Bunurong people of the Kulin nation, the traditional custodians of these lands & waters.



PRINCIPAL REPORT continued

Please note as well as QR code checking in DET now requires schools to check vaccination status for adults who enter school buildings. Adults who enter school buildings must have had two doses of COVID-19 vaccine by 29th November, have a valid medical exception or for the following limited exceptions: attending to administer medical treatment to a child where it cannot be administered by the school, attending to collect an unwell child who cannot leave the building unattended or if the visit is for a momentary period that does not involve sustained contact with staff, students or other adults.

Year 6 Market - We were required to change the date of the Year 6 Market. It is now on **Thursday 2nd December**. Please refer to the important information in this newsletter. Parents would have received a Compass notification regarding the purchase of "Market Packs" as this year the Year 6 Market is a "cashless" event. No cash will be handled on the day for purchases.

Book Pick Up Day - A reminder that Book Pick Up Day is **Wednesday 1st December** from **8am to 6pm** in the Staff Centre. Hygiene and social distancing practices will be in place.

Library Books and Take Home Readers - The school has some excellent literacy resources for our students including library books and take home readers. Keeping our collection of resources for students to use year to year is very important. This year there were reduced opportunities for borrowing but some books may be at home. Can parents have a look at home for any school books and return them to the Library or classroom as soon as possible. Thank you for your help.

End of 2021 School Year - A reminder that school finishes for 2021 on **Friday 17th December** with a **1.30pm dismissal time**.

Start of School 2022 - A note for your calendar that students in Year 1 to Year 6 commence school for 2022 on **Tuesday 1st February**. 2022 Prep students will have individual interviews scheduled for Tuesday 1st February to Thursday 3rd February inclusive. 2022 Preps start in classes on Friday 4th February from 9am to 2.15pm.

Kind regards

Martin Page

Information for students and staff identified as School Based Contacts

If you are contacted and advised that you or your child is a school based contact the following DET/DH actions are required:

- Contacts will be required to complete a standard (PCR) test within 24 hours from when they are identified by the school as a contact.
- If the PCR test returns a negative result, the student can immediately return to school. Evidence of the negative result must be provided to the school. This can be a screen shot of the PCR result emailed to mount.martha.ps@education.vic.gov.au or viewed at the school office.
- It is strongly recommended that contacts complete 5 days of rapid antigen tests in the morning before they attend school.
- You will be able to obtain these testing kits from testing centres from Monday 22nd November if your child is required to complete a standard PCR test.
- During the recommended 5 day period of rapid antigen testing, any student or staff member who return a positive rapid antigen test result must notify the school and immediately get a standard PCR test.
- You must report positive PCR results to the school as soon as possible as this may trigger additional contact tracing to limit transmission.

In exceptional circumstances the Department of Health may determine that contacts in significant school outbreaks are still required to quarantine for seven days. In this scenario, students will be notified directly of any additional quarantine arrangements.

Please note also:

- Confirmed cases are required to complete 10 days of isolation rather than 14.
- Vaccinated household contacts will complete 7 days rather than 14 days of quarantine. This includes unvaccinated children under 12 years, if all members of their household are vaccinated. Other unvaccinated household contacts are required to complete 14 days of quarantine.
- The Department of Health has advised that if a person has recently recovered from a COVID infection, there is a 12 week period following symptom onset (or positive test if asymptomatic) that quarantine is not required therefore are not included as a primary close contact/school based contact.

If you or anyone in your family develops even the mildest of symptoms, please get tested.

If you have questions about what this means for our school, please call the Department of Education and Training COVID-19 hotline on **1800 338 663**, available 8:30am to 5:00pm Monday through Friday, and 10:00am to 3:00pm Saturday and Sunday.

If you are concerned you have COVID-19 you can call the DH COVID-19 hotline on **1800 675 398**, available 24 hours a day, seven days a week.

IMPORTANT COVID INFORMATION - ARRANGEMENTS FOR ONSITE LEARNING

Some important points to note:

1. A critical measure in control of COVID-19 in schools is that unwell students should not be sent to school or remain at school if symptoms appear during the day or they become unwell. Parents will be contacted to collect unwell students who will be supervised while isolated from other students.
2. Face masks must be worn by students in Years 3 to 6 when indoors at school and recommended for students in Prep to Year 2.
3. If a student or staff member is diagnosed with COVID-19 the school will contact the Department of Education and Training (DET) who will direct the school in the next steps including provision of timelines and communication templates. The Regional Director determines whether the school will be shut to allow time for contact tracing and cleaning. Schools are required to follow the direction of DET in for action required, communication and timelines. Department of Health provides health advice to families. Testing and isolation of primary close contacts for a period of time is usually required.
4. The school day will commence at 9am as usual with students usually arriving at different times from about 8.30am. Please follow the "Kiss and Go" rules. This staggered arrival allows for a flow of students entering and easier physical distancing. **At the end of the day, students in Prep to Year 1 will finish at 3.30pm. Year 2 will also finish at 3.30pm when back onsite. Years 3 to Year 6 will finish school at 3.20pm.** A slightly earlier finish will allow an improved flow of students off site while still allowing siblings to meet if required for the walk home.
5. Siblings should have a pre-arranged and clearly understood outside meeting place if travelling home together.
6. Once a year level has returned, all students will be expected to attend school as normal. This means if a parent/carer chooses to keep their child/children home after their year level has returned to on-site schooling, the remote learning program does not continue. This does not apply to children who need to be absent for health, medical reasons or exceptional circumstances. For those families, please contact us so we can make an appropriate plan.
7. Students may choose to bring their own named water bottle. Drinking bottles can be refilled from taps during the day. Food is not to be shared.
8. A rigorous approach will be used by teachers to ensure all students wash/sanitise their hands each time upon entry and exit of rooms, before and after eating, after using the toilet and after coughing or sneezing. Students will be reminded of the need to cough or sneeze into their elbow and use tissues. All classrooms have handwashing and/or sanitiser available, tissues and antiseptic wipes. Parents may choose to supply their own child with sanitiser and tissues. Increased ventilation strategies are applied.

Continued

IMPORTANT COVID INFORMATION - ARRANGEMENTS FOR ONSITE LEARNING

9. Enhanced cleaning of the school particularly including high touch points and toilets will be undertaken.
10. The Chief Health Officer has highlighted the importance of social distancing between adults as a key control measure and must continue to be practiced. Social distancing is not required amongst students onsite. Parents are encouraged to only be onsite for essential business. Parents must not enter classrooms or corridors. Communication with teachers will continue to be via gmail and telephone. The Office is open but social distancing is required. Early pick ups or late arrivals will be organised from the Office. Parents must not congregate at the school gates and must practice social distancing. Parents are encouraged to wait offsite at drop off and pick up. We recognise that in the initial days of returning to school some students, particularly Preps, may require a parent to walk them in to school or a pick up but over time we should all be working to minimise this.
11. Essential visitors to school grounds must comply with density limits, face mask requirements, QR code/Compass Kiosk/manual check ins and practise respiratory etiquette and good hand hygiene.
12. Parent volunteers must show proof of being double vaccinated prior to their assistance in school events.
13. We have also made changes to the way our staff work and have breaks to ensure social distancing as well.
14. Designated play equipment and areas already exist for our students and oval use is timetabled. This together with a large play area will mean that recess and lunchtimes will remain at their usual times. Close contacts are also now defined as accumulated close contact of greater than 2 hours

More information about the return to school and coronavirus (COVID-19) can be found on the Department's website, which will continue to be updated:

<https://www.education.vic.gov.au/about/department/Pages/coronavirus.aspx>

The COVID Hotlines remain another important source of information:

Dept of Health- 1800 1800 675 398

DET- 1800 338 663

(available 8:30am to 5pm, Monday to Friday, and 10am-3pm Saturday to Sunday, excluding public holidays).

SCHOOL NOTICES

Dates to Remember Coming Events



NOVEMBER



Monday 29th

Year 6 Graduation Photo

9.15am



Tuesday 30th November

Year 3 Professor Bunsen Incursion

DECEMBER

Wednesday 1st

2022 Prep Transition Session 3

9.15am - 10.30am

Please meet at the outdoor amphitheatre near the back of the gymnasium

Book Collection Day 8.00am - 6.00pm
in Staff Centre



Thursday 2nd

Year 6 Market Day

Friday 3rd

PUPIL FREE DAY STUDENTS DO NOT ATTEND SCHOOL TODAY

Wednesday 8th

Prep Enchanted Garden

9.00am - 3.00pm, Arthurs Seat

Year 2 Reptile Encounters Excursion

9.00am - 12.30pm

Friday 10th

Year 3 Moonlit Sanctuary

9.00am - 1.30pm, Pearcedale

Wednesday 15th

Year 6 Gumbuya World

8.45am - 3.30pm, Tynong

Year 1 Dinosaur World

9.00am - 12.45pm, Somerville

Year 4 South Beach Lunch

10.30am - 3.00pm, Mount Martha

Year 5 Sausage Sizzle

10.45am - 1.00pm, Mount Martha

Year 3 Max The Magician

11.45am - 12.30pm, Mount Martha



COMPASS EVENT PAYMENT/CONSENT CALENDAR



With restrictions permitting, the below Events will be published to Compass once confirmed.

Parents are reminded to log into the Compass Parent Portal to consent and/or pay by the due date.

Please let the office know if your child will be away and/or will not be attending the event.

Thank you.

SCHEDULED EVENTS (TO BE CONFIRMED)	PROPOSED DATE	COST
Year 3 Professor Bunsen	30th Nov	\$12
Years 5 & 6 Swim Sports Years 3 & 4 Swim Sports	Cancelled	\$6 payments will be credited to accounts
Prep Enchanted Garden	8th Dec	\$28
Year 2 Reptile Encounters	8th Dec	\$15
Year 3 Moonlit Sanctuary	10th Dec	\$21
Year 6 Gumbuya World	15th Dec	TBC
Year 1 Dinosaur World	15th Dec	\$28
Year 4 South Beach Lunch	15th Dec	\$10
Year 5 Sausage Sizzle	15th Dec	\$2
Year 3 Max The Magician	16th Dec	\$3

TERM DATES: 2021

Term 4 4th October to 17th December

TERM DATES: 2022

Term 1 28th January to 8th April
Students in Years 1-6 commence
Tuesday 1st February 2022
(Prep Interviews 1-3 February)

Term 2 26th April to 24th June

Term 3 11th July to 16th September

Term 4 3rd October to 20th December

JAPANESE DAY

Japanese Day 2021

Last Wednesday 17th November MMPS was fortunate to hold another successful Japanese Day with some fantastic weather. The sports carnival (undoukai) was won this year by 'Shiro' しろ in a close contest by 71 pts to 68, despite the encouragement for 'Aka' あか from this year's ambassador Tay Tay Sensei. Our children made some fantastic arts & craft as well as showing some amazing Japanese-inspired drawings. Our COVID-19 [virtual assembly](#) featured many wonderful performances from our students. Thanks to my Year 6 LOTE leader, Sonny Fisher for his help throughout the day and my many Year 5 & 6 helpers on the oval. A special mention to Sweatman Sensei setting up

Arigatou!

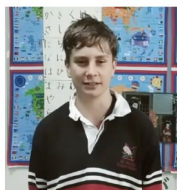
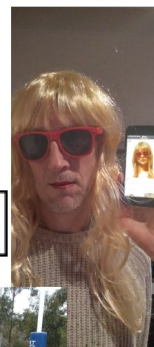
Bill Nickeas

Japanese Teacher



SHIRO WA YUSHO!

Tay Tay Sensei



SHIRO SHIRO SHIRO!

GANBARE!



AKA AKA AKA!



YEAR 6 MARKET - NEW DATE **Thursday 2nd December**

The Year 6 Market 2021 – New Date Thursday 2nd December

The Year 6 Students are currently undertaking an exciting Cross Curriculum based Project, 'The Year 6 Market 2021'. The project covers many curriculum areas including:

- Economics and Business
- Critical and Creative Thinking
- Personal and Social Capability
- Design and Technology
- English
- Mathematics.

This year's market will now be held on Thursday 2nd December during school hours and will predominately be an activity based market. The Year 6 students are very much looking forward to showcasing some new games and activities that will allow all students to have an awesome time, and win some fun prizes!! In addition to the activity stalls there will be a sausage sizzle, food stalls offering fruit, icy poles and sweet treats and stalls offering a selection of craft.

Don't forget that the market includes a sausage sizzle so, if you have purchased a market pack, you will not need to bring your lunch on that day.



PUPIL FREE DAY— OSHCP PROGRAM



MOUNT MARTHA PRIMARY SCHOOL
OUT OF SCHOOL HOURS CARE PROGRAM



PUPIL FREE DAY – FRIDAY 3RD DECEMBER 2021



COME IN AND JOIN US FOR OUR
'C' DAY!!



CREATIVE CRAFT, CONSTRUCTION, CATS AND MUCH MORE!!



COST: \$50.00

HOURS: 7.00AM TO 6.00PM

CONTACT: GILLIAN 0407 438858 FOR BOOKINGS

FREE DRESS!!



CHILDREN TO BRING THEIR OWN MORNING TEA AND LUNCH



BREAKFAST AND AFTERNOON TEA SUPPLIED

BOOKINGS CLOSE FRIDAY 26TH NOVEMBER



COMMUNITY NOTICE



SPREAD THE JOY OF CHRISTMAS

BONACCORDE WISHING TREE

PROUDLY SUPPORTING



SALVOCARE
EASTERN

DROP OFF YOUR UNWRAPPED GIFTS
FOR ALL AGES TO OUR OFFICE
4/42 LOCHIEL AVE, MT MARTHA
BY 15TH DECEMBER 2021

WWW.BONACCORDE.COM.AU

ADVERTISING

CLEVERDON CABINETS
KITCHENS, BATHROOMS & LAUNDRIES
(03) 9775-0506
cleverdoncabinets@hotmail.com

Alf Cleverdon 0412 264 097
Paul Cleverdon 0438 264 097

12/9 Elite Way
Carrum Downs 3201
www.cleverdoncabinets.com.au

ENROL NOW FOR 2021

Classes include:
R.A.D. CLASSICAL
JAZZ / HIP HOP
CONTEMPORARY DANCE
VCE DANCE
ACROBATICS

OFFICE: 5974 1498
www.mountmarthaschoolofdance.com.au

Facebook.com/marthaaschoolofdance
Instagram.com/marthaaschoolofdance

With over 31 years
EXPERIENCE

Stirling Tennis Coaching
Mt Martha Tennis Club

ENROL NOW

- Hot Shots Holiday Clinics
- School age groups 3.45 & 4.30pm
- Kinder classes 10.30am weekdays
- Cardio Tennis most days 9.30am

0411 082 723
slingard8@bigpond.com

What are the benefits of teaching kids yoga, mindfulness and meditation?

- Relieves stress and anxiety
- Relaxes and regulates emotions
- Greater awareness and creativity
- Improves concentration
- Increases productivity
- Better health and sleep

Book now for Term 3
www.pinkbuddha.com.au

Learn to Swim
We teach tiny tots to big kids
Call 5975 0777 for your
FREE introductory lesson*

kingswim
Mornington
kingswim.com.au

*T&C's apply

DR PETER SCOTT ORTHODONTIST
Children & Adult Specialist Orthodontist
Creating Beautiful Smiles
13 Beach St, Frankston 3199

BONACCORDE

AGENCY OF THE YEAR
ratemyagent
agent of the year awards
SUBURB WINNER 2021

SALES
PROPERTY MANAGEMENT
5974 8900

SOUTH BEACH PROJECT
Open daily from 8am for
breakfast & lunch.
Music from 1.30pm on Sunday.
Space available for private event
5974 4443
Website: www.southbeachproject.com.au

PENINSULA NUT CO

info@peninsulanutco.com.au
0402 097 545

Online orders at:
www.peninsulanutco.com.au

*Fresh nuts, chocolates,
dried fruits, seeds,
'Humpercrunch' muesli and
more... delivered to your
door!*

**Use discount code
MMPS for FREE
delivery on orders
over \$20**

The Property Bureau
www.propertybureau.com.au

Expertly guiding you through your next property transaction
Buyer and Vendor Advisory for your home or investment property
Boutique Property Management

Kristy Caskey
kristy@propertybureau.com.au
0408 166 944

MountMartha Preschool
Where children are seen & heard

Offering
3 and 4 year old
kindergarten programs
in a beautiful
bushland setting.

Mount Martha Preschool
35 Watson Road,
Mount Martha VIC 3934

P. (03) 5974 2065
E. mount.martha.kin@kindergarten.vic.gov.au
facebook.com/MtMarthaPreschool/

MILES FROM

10% off for all MMPS Mums
Use Code **MMPS10** at Checkout

www.milesfrom.com.au