



Mt. Martha Primary School

Mt Martha Primary
Principal
Mr Martin Page

Assistant Principals
Mr Hugh O'Brien
Mrs Karen Walker

**Mt Martha Primary
Contact Details**
37-55 Glenisla Dve
Mt Martha Vic 3934

Reception
5974 2800

Fax
5974 3634

Absentee Reporting
Lodge via Compass parent portal

Website
www.mtmarthaps.vic.edu.au

Email
mount.martha.ps@edumail.vic.gov.au

Office Hours
8.30am - 4.15pm
Monday - Friday

**OSHCP - Out of School Hours Care
Program**
0407 438 858
Coordinator - Gillian Reid



PSW Mornington Uniform Shop
Mon - Friday 9am - 5pm
Saturdays 10am - 1pm
1/22 Watt Road,
Mornington Vic 3931
03 9768 0346
1800 337 396
Online Ordering:
www.psw.com.au

BANKSIA BULLETIN - 9 May 2019

Mt Martha Primary School strives to empower students to be active learners who make a positive impact in a changing world.

ACTING PRINCIPAL'S REPORT

Mother's Day Stall - A very big thank you to our SEC members and helpers for organising and running the Mother's Day Stall yesterday. We had so many excited students taking time to choose that special gift from the wide range on offer! I am sure all those in our community receiving these special gifts on Sunday appreciate all the hard work that goes into organising and running events like this for our families. Thank you again to all involved.

Cross Country - Due to the predicted poor weather, we decided to postpone the Cross Country. The new date is **Monday 13th May** with times changing due to school commitments and the Specialist programs. Please refer to the Sport News further in this newsletter.

Year 4 Camp - Our Year 4's will be attending Arrabri Lodge Camp at Warburton for Wednesday, Thursday and Friday next week. They are sure to enjoy the wide range of activities on offer including challenging outdoor activities and a ride on Puffing Billy as well as all the other experiences of being on camp. Thank you to staff and helpers for attending.

NAPLAN - NAPLAN testing for students in Years 3 and 5 is on next week- Tuesday 14th May, Wednesday 15th May and Thursday 16th May. Friday 17th May is scheduled as a "catch up" opportunity for students who may have missed a test earlier in the week. NAPLAN results are used with our other assessments of student learning and will be available later in the year.

Attitude to School Survey - From 13th May to 31st May students in Years 4 to 6 across the state will participate in the Department of Education Attitude to School Survey. This survey has been completed in previous years by students in Years 4, 5 and 6 and asks a range of questions about how they feel about their teachers and school. This information is useful feedback as we work to improve our curriculum, student engagement and wellbeing. The survey is delivered on a secure online format with information aggregated and not identifiable.

Contact details - There are times when we will need to contact you, including on the day if your child is absent and you haven't informed the school as to why. Do we have your most up to date contact details? If not, please update your records on Compass if anything has changed. Please include parent/carers' name, address, phone numbers, email address and emergency contact details. Please remember to update Compass if any of these details or your circumstances change or alternatively contact the school office.

Notify the school of your child's absence - Protecting the safety and well-being of children through the reporting and monitoring of absenteeism is the responsibility of both parents/carers and schools. Please remember to log your child's absence using Compass early in the morning if your child is going to be away or late for school so your child's absence can be recorded correctly. Compass will generate a message to you on the day your child is recorded as absent at school. If you are notified by the school that your child is away without a reason, please contact us as soon as possible by calling the Office on 5974 2800 to let us know where your child is. Thank you for your assistance.

Warm Regards,
Karen Walker

Our Mission is to ensure high quality and engaging learning program that builds on the capability of every student.

SCHOOL NOTICES

Dates to Remember Coming Events

MAY



Friday 10th

Whole School Assembly

9.10am in Gym

Monday 13th

Whole School Cross Country

(For times please refer to Sports News later in this bulletin)

5D Body Education Session 2

9.00am - 10.00am

5C Body Education Session 2

10.00am - 11.00am

5B Body Education Session 2

11.30am - 12.30pm

Tuesday 14th

Prep Assembly

9.00am - 10.00am in Gym

Wednesday 15 - Friday 17th

Year 4 Arrabri Lodge Camp

Students to arrive at 7.30am for an 8.00am departure

Students return to MMPS on Friday at approximately 3.00pm parents will receive an SMS.

Wednesday 15th

6A Body Education Session 2

9.00am - 10.00am

6C Body Education Session 2

10.00am - 11.00am

5A Body Education Session 2

11.30am - 12.30pm

COMPASS EVENT PAYMENT/CONSENT CALENDAR



Parents are reminded to log into the Compass Parent Portal to consent and/or pay by the due date.

Please let the office know if your child will be away and/or will not be attending the event. Thank you.

EVENTS	COST	CLOSING DATE
Year 3 Market	\$9	30/5/2019
Year 2 Earth Treasures	\$29	10/6/2019

PUPIL FREE DAY - Tuesday June 25, 2019

TERM DATES: 2019

Term 2 23rd April to 28th June
Term 3 15th July to 20th September
Term 4 7th October to 20th December



Bendigo Bank
Bigger than a bank.

bendigobank

STUDENT BANKING EVERY TUESDAY

NAPLAN

The National Assessment Program – Literacy and Numeracy (NAPLAN) 2018 for Years 3, 5, 7 and 9 students will be held on Tuesday 14 May, Wednesday 15 May and Thursday 16 May 2019. NAPLAN tests assess student knowledge and skills in Writing, Reading, Language Conventions (spelling, grammar and punctuation) and Numeracy.

The results of the tests provide information for students, parents, teachers and principals which can be used to improve student achievement.

All students are expected to participate in the NAPLAN tests. During test week, catch-up tests will be available for individual students who are absent on test days. These students may undertake catch-up tests on the days in the test week after the scheduled test, up to and including Friday 17 May 2019.

Exemptions may be granted to students with significant intellectual disabilities and to students who have been learning English for less than one year.

If your child is eligible for support due to disability or an exemption, you should discuss this with his/her teacher prior to the tests. Parental consent is required before any support due to disability or exemption is granted.

Students may be withdrawn from NAPLAN by their parent or carer. This is a matter for consideration by parents and carers in consultation with the school. If, after consultation, you decide to withdraw your child, you must sign a Student Withdrawal form. These forms are available at the school.

Later in the year you will receive your child's personal NAPLAN report. The report will describe your child's particular skills in Reading, Writing, Language Conventions (spelling, grammar and punctuation) and Numeracy. The report will also show how your child performed in relation to national minimum standards. These describe the minimum acceptable standards for students across Australia.

For more information about the tests, please visit the VCAA website <https://www.vcaa.vic.edu.au/Pages/prep10/naplan/parents/index.aspx> at or the NAP website at <https://www.nap.edu.au/naplan/the-tests>

Karen Walker
Acting Principal

SPORT NEWS



WHOLE SCHOOL HOUSE CROSS COUNTRY - NEW DATE

Due to the predicted poor weather today, we have decided to postpone the Cross Country. The new date is **Monday 13th May** with times changing due to school commitments and the Specialist programs (please see below)

Students will be running in their age group race (the age is what age they are on 31st December 2019). I would also like to encourage all students to wear their house colors and comfortable running shorts or pants. If you are unsure what house your child is in – please see the classroom teacher.

ALL COMPETITORS WILL RECEIVE A CERTIFICATE

1 Lap = 1km

9:00	Prep	* 1km*
10:00	Year 3 / 4 (9/10yr olds)	*2km & 1km Fun Run*
RECESS		
11:30	Year 2 (8yr olds)	*1 km*
12:00	Year 6 (12/13yr olds)	*3km & 1km Fun Run*
LUNCH		
2:00	Year 1	*1km*
2:30	Year 5 (11yr olds)	*3km & 1km Fun Run*

We will be holding 2 different events for 9/10, 11 and 12/13yr old races:

COMPETITION: Competitors are to complete the set amount of km/laps for their age group.

FUN RUN: This race is a modified race, 1km which allows students to reduce the laps to complete what they are capable of. This is a non-competitive race and will cater for students who find it difficult and wish to walk the track.

Top 10 from Year 2 - 6 students who run the competition will represent our school at District level at Penbank School on **Wednesday 22nd May**.

Parents are encouraged to attend and support children. The sports leaders will act as 'Hares' for each race so the children have something to follow. The students will also be supervised around the track by teachers for with every race.

AUSTRALIAN NATIONAL TABLE TENNIS COMPETITION

In July, Charlie (Year 5) and Georgia (Year 2) have been selected to represent Victoria in the 2019 Australian National Table Tennis Competition in Wollongong NSW. They have both been selected due to their under 11 Victorian rankings: Charlie 6th and Georgia 8th.

We wish them all the best for the Competition in July.

Cameron Sweatman, PE teacher.

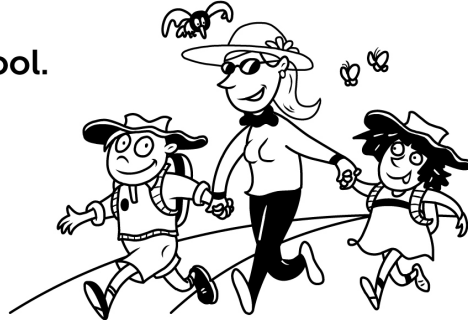
TRAVEL SMART NEWS

Leave the car at home. Try walking or cycling with your child to and from school. It's better for their health and the environment, and will reduce the traffic around our school.

arrive
alive

vicroads

Victoria
The Place To Be



CROSS COUNTRY NEWS

Cross Country Training

Mrs O'Connor will support students interested in doing some training before school on Tuesday and Thursday morning from 8:30 - 8:50 to prepare for school cross country in May. Training will run alongside jogging club with students adding their laps to their jogging club cards. Training will suit all abilities. So grab your jogging club card and meet Mrs O'Connor on the basketball courts. Parents are welcome to join in!



SPORT NEWS

On the first week of the school holidays Georgie represented the school at the Victorian Interschool State Championships held at Werribee. She competed over 4 days in the Dressage, Combined Training and Show Jumping. She came mid field against some strong competition in the Preliminary Dressage. She managed to take out 4th place in the Phase 2 - One round 45cm Show Jumping and made it through to the jump off in the Phase 1 AM5. It was a great experience overall for and she is looking forward to participating next year.

Congratulations Georgie!





Dear Parents and Carers,

Currently our staff, parents, carers and students are being surveyed about aspects of the Be You initiative, to ensure that our programs are targeting the needs of our school community. We need as many parents and carers as possible to complete the survey to assist us with our planning and ongoing work in this important area.

By completing the Be You Family Survey, your constructive feedback and valuable suggestions will enable us to set the future direction for the new National Education Initiative from Beyond Blue – Be You - at our school. Our school staff are currently working on 'Responding Together' to ensure that we can support families in times of need.

Please support our commitment to improving student mental health and wellbeing at Mt Martha Primary School by completing the survey and adding your comments.

The Be You Family Survey is now available to complete online, for a period of one month, from Thursday the 9th of May. We will continue to provide reminders and links in the Banksia Bulletin over the next few weeks.

You can access the survey by clicking on this link: [Families Survey](#)

A direct link will also be placed on the Mt Martha Primary website home page.

To select our school you will need to type in:

Mount Martha Primary School, MOUNT MARTHA, VIC – The schools should appear as you type. This sometimes takes a minute to load.

Complete all sections of the survey and if required add comments at the end.

For more information about Be You, go to <https://healthyfamilies.beyondblue.org.au/> or

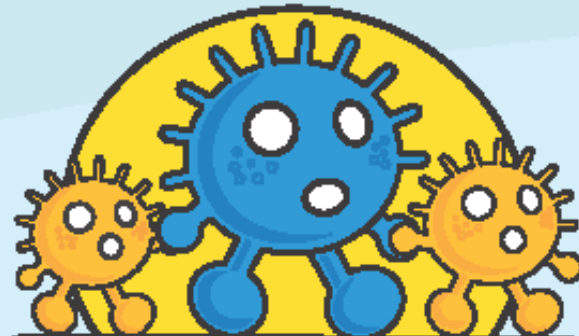
[Be You Families - Home | Facebook](#)

During the next few weeks, teachers will be asking students to complete the Be You Student Survey online during class time. The Be You Team will use feedback from the student responses to guide our Social and Emotional curriculum at Mt Martha Primary and to address areas of need identified by students.

We thank you for your great support of both the Parent Survey and Student Survey. If you require further information please don't hesitate to contact Karen Hodgkins, a Be You Team member or your classroom teacher.

Kind regards,
Karen Hodgkins and the Be You Team.

ACTIVE KIDS ARE SMARTER KIDS



**WALK SAFELY
TO SCHOOL DAY**

FRIDAY 17 MAY 2019



**Until they're ten, children must always hold
an adult's hand when crossing the road**

WALK.COM.AU



@nationalwalksafelytoschoolday



@natwalktoschool



@natwalktoschool

#WSTSD

SUPPORTED BY THE AUSTRALIAN GOVERNMENT AND ALL STATE, TERRITORY AND LOCAL GOVERNMENTS

WORKING BEE at MMPS!



Dear Parents - we are asking for your help at our
Term 2 Working Bee!



Date: Saturday May 18

Time: 9am - 12pm.

If you can bring along useful tools like a broom, wheelbarrow, spade, pitchfork (for mulch) etc that would be very helpful.

Make sure you wear footwear that is appropriate for outdoor tasks.

We do have some equipment ie gloves, protective glasses but it would be helpful if you bring some too!
Thanks.

All children must be accompanied by an adult.

Morning tea will be provided.

Gold For Green Day.

Thursday 23rd May

Wear Green. Bring a Gold Coin.

Help us green our world.



Activities will include:

- Reading *One Thousand Trees*. Story Box Library
- Pledges to the environment by all our students.
- Preps: Planting in the Prep Forest with their Year Four Buddies
- Year One: Insect Hotels
- Year Two: Cardboard Cubbies
- Year Three: Layered glass jar gardens.
- Year Four: Assisting Preps.
- Year Five: Environmental Collages
- Year Six: Garden Maintenance

SCHOLASTIC BOOK FAIR



SCHOLASTIC BOOK FAIR - May, Wed 22nd - Friday 24th.

Mt Martha Primary School is hosting a Book Fair. This special event celebrates books and reading and gives children, parents, teachers and community members the opportunity to purchase quality books. The fair will be set up in the Staff Centre and will be visited by each class at their allocated time on Monday and Tuesday during school hours. From Wednesday we encourage you to drop in and take a look at what's on offer during the following times:

Wednesday 22nd 8.30 - 9.30am and 3 - 4pm

Thursday 23rd 8.30 - 9.30am and 3 - 4pm

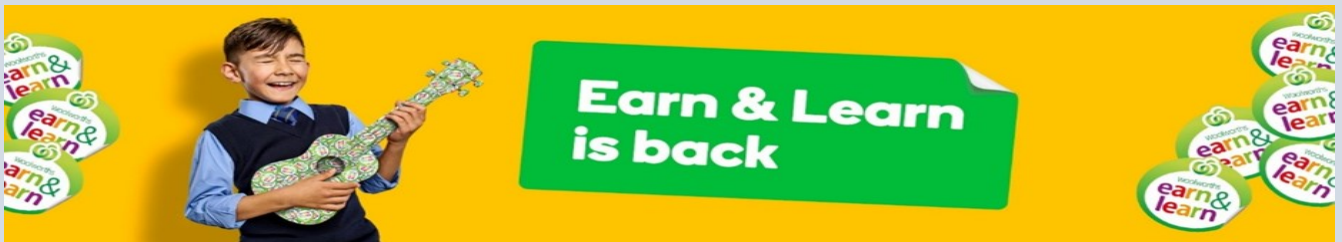
Friday 24th 8.30 - 9.30am only

(there is no afternoon session)

A percentage of the proceeds from the sales of these books directly contributes to raising funds for the school to purchase many more valuable resources for our children's literacy pleasure. This is a great opportunity to have a leisurely browse at some of the great books available.

Georgina Street, Book Club Coordinator.

EARN AND LEARN



From Wednesday 1st May to Tuesday 25th June 2019, when families shop at Woolworths they can collect Woolworths Earn & Learn Stickers from the checkout operator and place them on a Woolworths Earn & Learn Sticker Sheet. There'll be one Woolworths Earn & Learn sticker for every \$10 spent (excluding liquor, tobacco, and gift cards). Once completed, simply place the Sticker Sheet in the Collection Box which is located in the school office foyer. Anyone from the community – staff, parents, grandparents, neighbours and friends - who shop at Woolworths can collect stickers for our school. In the past we have received valuable resources that have assist in supporting our Literacy, Numeracy, Science and Lunchtime programs. Student will all receive a sticker sheet. More will be available at the school office or can be downloaded at <https://www.woolworths.com.au/shop/discover/earn-and-learn>

There are thousands of education resources available through the Woolworths Earn & Learn Program so start collecting now!

Karen Walker, **Acting Principal.**

FIRST AID NEWS

Head Lice

We are having a real problem with head lice at the moment. Could you please check your child's hair for live eggs or lice?

There are two choices of treatment:

Non-chemical: Use conditioner and comb with a head lice comb to remove the head lice and eggs and repeat every 2 days until no live lice have been found for 10 days.

Chemical: Treat and comb with a head lice comb to remove the head lice and eggs; and repeat in 7 days.

The conditioner and comb method is very successful and less harsh on children's heads. For prevention of further outbreaks, leave a head lice comb in the shower and comb through the conditioner once a week while washing your hair. Head lice take 14 - 17 days to mature so if you continue to comb each week you will remove the lice before they are able to lay more eggs and thus break the cycle.

Another important step to prevent head lice is to ensure all hair that is shoulder length or longer is tied back as per the MMPS Uniform Policy. As head lice do not fly or jump, they only crawl, it is only direct hair to hair contact that allows transference. By tying hair back this minimises the risk of head lice infestation.

If you have any further questions, please do not hesitate to contact me in the First Aid room from 10.45am to 2.15pm on 5974 2800.

Thanks for your co-operation.

Lorraine Stuart
First Aid Officer

Children's Book Week 2019 ANNUAL STORY WRITING COMPETITION



There are Farrells book vouchers up for grabs as prizes and winning entries are published on our website.

There are five different age groups:

1. Lower Primary: Prep and Year 1
2. Middle Primary: Years 2-4
3. Upper Primary: Years 5 and 6
4. Lower Secondary: Years 7 to 9
5. Upper Secondary: Years 10 to 12

Entries may be in picture story or short story formats. Primary level short stories must not exceed 2 pages/1000 words. Secondary level short stories limited to 3 pages/1500 words. Only entries within the word limits will be read, so practice your editing skills! In all groups, limits of one individual entry and one collaborative entry per person.

Hard copy entries can be dropped in our competition box in store. Electronic entries can be submitted to events@farrells.com.au with the Subject: *CBW 2019 Story Comp*. Please use either Microsoft Word or PDF format.

Please ensure you include your NAME, AGE and GROUP OF ENTRY, and contact information (phone and email), written clearly!

ENTRIES CLOSE SUNDAY 30 JUNE

Winners announced in store 3pm Saturday 17 August
We are thrilled to welcome author JANE GODWIN
to help present our prizes this year

www.farrells.com.au | 5975 5034

Children's Book Week 2019
**STORY WRITING
COMPETITION**



ENTRY COVER SHEET

NAME(S): _____

STORY TITLE: _____

AGE: _____

ENTRY GROUP (Please circle one):

Lower Primary Prep and Year 1	Middle Primary Years 2 to 4	Upper Primary Years 5 and 6
Lower Secondary Years 7 to 9	Upper Secondary Years 10 to 12	

SCHOOL
(Optional): _____

PHONE: _____

EMAIL: _____

☐

Please tick the box if you wish to collect your story after the competition (all uncollected entries will be discarded)

SCHOOL TOURS

MAY 2019

9.30am

Tuesday 21st

Wednesday 22nd

Thursday 23rd

Please meet at the
school office.
No bookings required.



Dear Parents/Guardians,

You are most welcome to visit our school. Your child may soon be joining our learning community.

Please consider taking the opportunity to visit our school for a tour on Tuesday 21st, Wednesday 22nd, or Thursday 23rd where you will see our current Prep students in their learning environment. Enrolments for Prep 2020 will be taken at school during the week of 20th - 24th May.

Enrolment forms need to be lodged at the school office by
Friday 31st May 4.00pm.

Confirmation letters will be mailed by Friday 26th July.

2020 PREP ENROLMENT WEEK

Mt Martha Primary School
Monday 20th to Friday 24th May

Tours take
approximately
45 minutes

Mt Martha Primary School

Glenisla Drive
Mt Martha, 3934

Phone: 5974 2800
Fax: 5974 3634

E-mail: mount.martha.ps@edumail.vic.gov.au
Web: www.mtmarthaps.vic.edu.au

Enrolment boundary

All children who are eligible to attend a Victoria Government school are able to attend our school if they reside within the South Eastern Victorian Region of DET designated neighborhood boundaries for our school or have siblings already enrolled at Mt Martha Primary School.

Families residing outside our school's designated neighborhood boundaries will be placed on a waiting list for 'consideration of enrolment'. Should our school have vacancies in the Year level required by the family an offer will be made following the priority order list on our website.

To view our boundary map and Enrolment Policy please visit our website at www.mtmarthaps.vic.edu.au.

Children being enrolled must reach five years of age by April 30th 2020.

When you come to enrol you will need to provide the school with

- proof of age - a copy of a birth certificate or extract of birth
- an Immunisation History Statement indicating your child's immunisation status
- Proof of residency

All the enrolment information you require will be provided at the school office. We hope to meet you on one of our school tours.

Yours faithfully,

Martin Page, Principal.

Play Based, Child Centred Learning



Hands-on Maths

**Mount Martha Primary School
Educating Children of Today for Tomorrow**

Developing a Love of Literature



School-wide Multimedia

2020 Prep Information Evening

**Thursday 16th May 2019 at 7.15pm
in Staff Centre**

**A school tour will commence at 6.30pm from the school office.
Please note no bookings are required.**

Mt Martha Primary School

Glenisla Drive Mt. Martha, 3934. Phone: 59742800. Fax: 59743634.
Email: mount.martha.ps@edumail.vic.gov.au

COMMUNITY NOTICES

Net Set Go commences this Saturday at MPNA Mornington netball courts

For children aged between 5-10 years

**Great introduction to netball skills for Children in Prep & Year 1 before
commencing playing in netball team in year2**

Mornington Peninsula Netball Association



Welcome to NetSetGO!

NetSetGO is Netball Australia's only junior entry netball program. It has been developed to provide children from 5 to 10 years with the best possible learning and playing experience to develop a positive introduction to netball, ensuring enjoyment and continued participation. NetSetGO incorporates skill activities, minor games, music, dance and modified matches in a fun and safe environment.

The weekly program is coordinated by approved Centres to ensure a quality experience for all participants.

Saturday - Net - Activity/Skills NET SET GO 2019

Activity Dates: 11-May to 24-Aug Start Time: 09:00AM

Register via link

<https://netsetgo.sportzvault.com/common/pages/reg/welcome.aspx?id=46135&mode=0&sslredirect=1&prodid=346319&entityid=39518>

COMMUNITY NOTICES

Mount Martha Preschool

OPEN morning



Come along to
our open morning
or call us on
03 5974 2065
to arrange a visit.

Saturday
1 June 2019
10am to 12pm

For over 40 years, we have provided local families with an inclusive, child-focused approach to early learning. Inquisitive minds are encouraged, inspired and supported.

We offer:

- 3 year old and 4 year old kindergarten programs
- a play-based curriculum informed by the latest research
- excellent facilities and a natural outdoor space
- beautiful bushland setting next to Balcombe Estuary
- a small team of passionate, experienced educators.

**But don't just take our word for it
- come and visit!**



35 Watson Rd, Mt Martha

mtmarthapreschool.com.au

OPEN DAY

Mornington Special Developmental
Wednesday 22nd May 10AM - 1PM



We invite all present, prospective and interested friends to join us to come and see what our school has to offer.

We are committed to developing and maximising the social, emotional and academic abilities of every child by offering individualized programs that cater for children that require additional support.

- Meet our committed and highly qualified teaching staff
- Hear our current students talk about their class and school programs
- Hands on demonstrations of our Gardening program
- Many displays on our additional programs and curriculum areas.
- Sausage sizzle and drinks provided
- Bouncing castle

40 Robertson Drive, Mornington

Enquiries: 03 59 756 111 email: mornington.sds@edumail.vic.gov.au





ART CLASSES

Are you looking for a creative program
for yourself or your kids this term?

We have a variety of beginner's art
classes throughout the week, and
special monthly workshops – keep your
eyes peeled for those!

BOOKINGS ESSENTIAL

Visit the front office or go to
mountmarthahouse.com.au

We Offer:

Kids'

Weekly After School Art Classes
5 weeks - pay for 4, \$115

Tues/Wed: 4-5:30pm
30 April / 1 May

Mums with Bubs'

Social DIY Classes
Weekly casual, \$5

Tues: 1-2pm, 30 April

Adults'

Art & Craft
Beginner Classes
5 weeks - pay for 4, \$115

Wed: 1-3pm, 1 May

Tweens'

Monthly Workshops, \$20
Fri: 6-8pm,
10 May & 7 June

MOUNT MARTHA HOUSE
COMMUNITY CENTRE

Art Room
Cnr Dominion Rd &
The Esplanade,
Mount Martha

MOUNT MARTHA HOUSE COMMUNITY
CENTRE



For 8-12 year olds
Book in - call Sandra
mob. 0402 051 293

AFTER SCHOOL
KIDS + CAMERAS CLUB

5 WEEK PROGRAMS \$125
MONDAY 29 APRIL/27 MAY
OR THURSDAY 2/30 MAY
4-5.30PM-MT MARTHA HOUSE

LEARN THE RULES OF PHOTOGRAPHY THEN BREAK THEM!
STUDIO LIGHTING - LANDSCAPE - FOOD - DOCUMENTARY - ABSTRACT

Emotional resilience through mindfulness 8 to 12 yrs

Emotional Resilience through mindfulness is a combined 1-hour session specifically designed for **primary school children**

So, what is Emotional resilience through Mindfulness?

Mindfulness is the practice of focusing on the moment and not worrying about the future or the past.

Emotional resilience is about providing children with the appropriate skillset to help them to name their feelings, manage their emotions appropriately, solve problems, and make good decisions that they are comfortable and confident with.

So, when we can pause, relax, become present, curious and accepting, there is no emotional stress. We may still have emotions, but Emotional Resilience through Mindfulness practice has us being curious and non-judgmental shifting the focus to a positive approach.

**Mt Martha House
Community Centre
466 Esplanade, Mt Martha**

**Mondays 6pm – 7pm
Commencing 13 May
\$90 for six sessions**

**Bookings essential
– website
mountmarthahouse.com.au
Enquiries
– Bernadette 0430 501 913**

Mount
Martha
House

Community Centre



MORRINGTON
PENINSULA
Shire

 **Mount Martha**
School of Dance

ENROL NOW FOR 2019

KINDER DANCE
R.A.D. CLASSICAL
JAZZ / HIP HOP

ACROBATICS
CONTEMPORARY
VCE DANCE

www.mountmarthaschoolofdance.com.au  [instagram.com/mtmarthaschoolofdance](https://www.instagram.com/mtmarthaschoolofdance)
 [facebook.com/mtmarthaschoolofdance](https://www.facebook.com/mtmarthaschoolofdance)

With over 30 years experience



Ask about our fantastic loyalty program.

CAPEZIO

From footwear to uniform, for all styles of dance.

12-14 MILGATE DRIVE | MORNINGTON | 03 59750266
MORNINGTON@CAPEZIO.COM | CAPEZIOAUSTRALIA.COM

STIRLING TENNIS COACHING

MT MARTHA TENNIS CLUB

Tennis....fun for life! Coordination, fitness and fun
Tennis lessons from only \$17 per week
Hot Shots program 4-16yrs
Adults Cardio program Mon-Fri 9.30am

Extensive Holiday program running during Easter School Holidays

slingard8@bigpond.com or call Stirling 0411 082 723
www.tennis.com.au/mtmarthatc

COMPLETESTEP

Cost effective &
up-to-date solutions
for foot pain

PODIATRY & FOOTWEAR SPECIALISTS

Podiatrists: Dr George Murley (PhD), Philip Young, Ms Anita Spring



20% off RRP for Professionally fitted
CLARKS SCHOOL SHOES!

Ph. 5974 8565 or Book Online at completestep.com.au

Dr Peter Scott Orthodontist

Children & Adult Specialist Orthodontist

Creating Beautiful Smiles

13 Beach St, Frankston 3199

PH: 9783 4511

Your local Property Manager.

Looking after all your residential and holiday
property leasing needs.

Lauren Dyson

(03) 5970 8000
rentalsmornington@stonerealestate.com.au

STONE

DANCE • ACT • SING

the performers project

9 Bennetts Rd Mornington



Ph: Emma 0419173406

Learn to Swim

We teach tiny tots to big kids

Call 5975 0777 for your
FREE introductory lesson*



kingswim
Mornington
kingswim.com.au

*T&C's apply



IF IT'S NOT CRIMSAFE,
IT'S NOT CRIMSAFE
...SECURITY DOORS & SCREENS
15% DISCOUNT FOR MMPS

CALL TIM ON 0425794999



five seasons natural medicine

Acupuncture & Chinese Medicine

Renae Campbell BAppSc (Acupuncture)
66 Osborne Dve, Mount Martha
5seasons.com.au
0415 434 324



SOUTH BEACH PROJECT

Open daily from 8am for
breakfast & lunch.
Music from 1.30pm on Sunday.

Space available for private events.

5974 4443

Website: www.southbeachproject.com.au



03 9587 1875

www.victorianbathroomcompany.com.au

**VICTORIAN
BATHROOM
CO**

Bathroom Renovations | Shower Repairs | Tiling
Waterproofing & Plumbing